

# HILLDAV

## Digital Thermometer

### Digital Thermometer

TC308K



TC308K Digital Thermometer

#### DIGITAL THERMOMETERS

##### TC308K Digital Thermometer

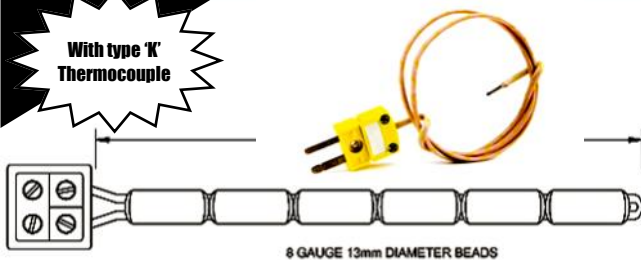
PRICE      **RETAIL**  
NO GST      with GST

\$225.00      **\$247.50**      **DITITAL INDICATOR**

Type '**K**' (BATTERY INCLUDED). with  
THERMOCOUPLE—WIRED UP READY TO GO  
Type 'K' single Input ( Mini Plug )

- Auto Power Off
- 14mm high digit LCD display.
- Power supplied by 9v battery (supplied)
- Range Type K Input—50 to 1300 °C
- Accuracy +/- 0.3 % + 1°C
- Resolution 0.1 °C to 199.9 °C then 1°C
- Case is manufactured form hi-grade ABS plastic and in supplied with a moulded rubber boot which makes it ideal for studio conditions and perfect for you to just put in your tool bag for transport.
- Recalibration / Offset Screw on face
- Minimum / Maximum Function
- Mini plug well protected in top panel of Instrument
- Weight; 300g

With type 'K'  
Thermocouple



Spare **THERMOCOUPLE** with  
**LEAD & MINI PLUG.**

\$87.05      **\$95.75**      SPARE TYPE '**K**'

# HILLDAV

## Kiln Controllers & Thermocouples Kiln Controllers & Thermocouples

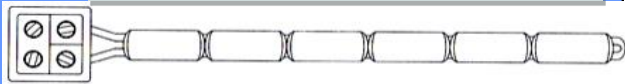


4 Pin Plug

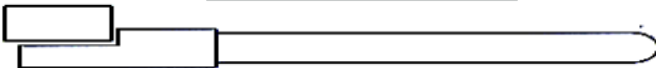


4 Pin Socket

Thermocouple Type K & N

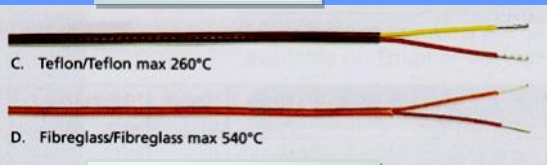


Type "R" Thermocouple



Ceramic Sheath

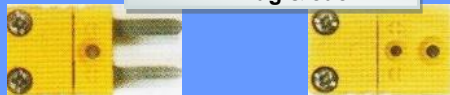
Compensating



Standard Plug & Jack

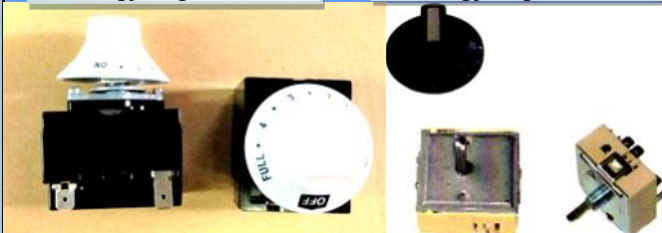


Mini Plug & Jack



Energy Regulator 16

Energy Regulator 13



### 4 PIN PLUG & SOCKET

\$59.85	<b>\$65.83</b>	<b>4 PIN PLUG</b>
\$75.18	<b>\$82.69</b>	<b>4 PIN SOCKET</b>

### THERMOCOUPLES

\$59.50	<b>\$65..45</b>	<b>THERMOCOUPLE</b> type 'K' - - - 10" "K" Chrome/Alumel
\$59.50	<b>\$65.45</b>	<b>THERMOCOUPLE</b> type 'N' - - - 10" "N" Nircosil/Nisil
\$223.00	<b>\$245.30</b>	<b>THERMOCOUPLE</b> type 'R' - - - - 9" 'R' 13% Platinum/Rhodium.

### CERAMIC SHEATH

\$64.00	<b>\$70.40</b>	<b>CERAMIC SHEATH</b> 10" for type 'K' & 'N'
\$64.00	<b>\$70.40</b>	<b>CERAMIC SHEATH</b> 7mm for type 'R'

### COMPENSATING WIRE

\$14.4	<b>\$14.95</b>	<b>COMPENSATING WIRE</b> GLASS COVERED TPYE 'K' 'N' & 'R'
\$13.90	<b>\$15.30</b>	<b>COMPENSATING WIRE</b> PLASTIC COVERED TPYE 'K' 'N' & 'R'

### PANEL JACK & SOCKET

\$48.19	<b>\$53.00</b>	Standard size JACK type 'N' 'K' & 'R'
\$36.00	<b>\$39.60</b>	Standard size PLUG type 'N' 'K' 'R'
\$35.88	<b>\$39.47</b>	Mini size JACK type 'K'
\$55.95	<b>\$61.55</b>	Mini size PLUG type 'K'

### ENERGY REGULATOR

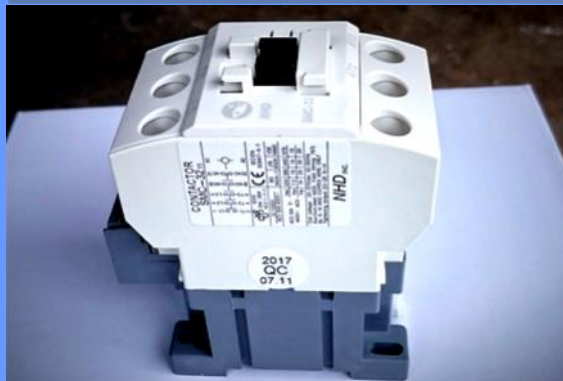
\$58.00	<b>\$63.80</b>	<b>EGO</b>	13amp with KNOB
\$70.00	<b>\$77.00</b>	<b>SUNVIC</b>	16amp with KNOB

# HILLDAV

Contactors, Switches & Other Control Equipment.

**Contactors, Switches & Other Control Equipment.**

SMC- 22 40AMP 3 Pole , SMC40 60AMP 3 pole



**PRICE**      **RETAIL**      **ELEMENT CONTACTORS**  
NO GST with GST

\$88.00      **\$96.80**      **SMC-22**      3 Pole, 40 amp.

\$120.00      **\$132.00**      **SMC-40**      3 Pole, 60 amp.

\$50.00      **\$55.00**      **Power Relay 735-2C-C1**



**735-2C-C1**

**DOOR SWITCHES**

\$41.15      **\$45.60**      **DOOR SWITCH**

HILLDAV, WARD

\$49.45      **\$49.45**      **DOOR SWITCH**

TETLOW.

\$56.00      **\$60.60**      **DOOR SWITCH**

CESCO & other kilns.

**Door Switch**

Used on Hilldav & Ward Kilns



**Door Switch**

Used on Cesco & other Kilns



**DOOR LATCHES**

\$130.50      **\$143.55**      **HILLDAV "T" Type**

\$62.00      **\$68.20**      **WARD "T" Type.**

\$42.00      **\$56.20**      **WARD, TETLOW** Small kiln model

**Door Latches**

Tetlow & Ward



**KILN BUNGS**

\$54.00      **\$59.40**      **HILLDAV**

\$12.00      **\$13.20**      **UNIVERSAL**

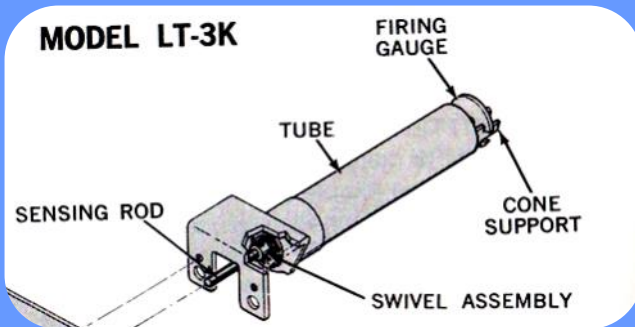
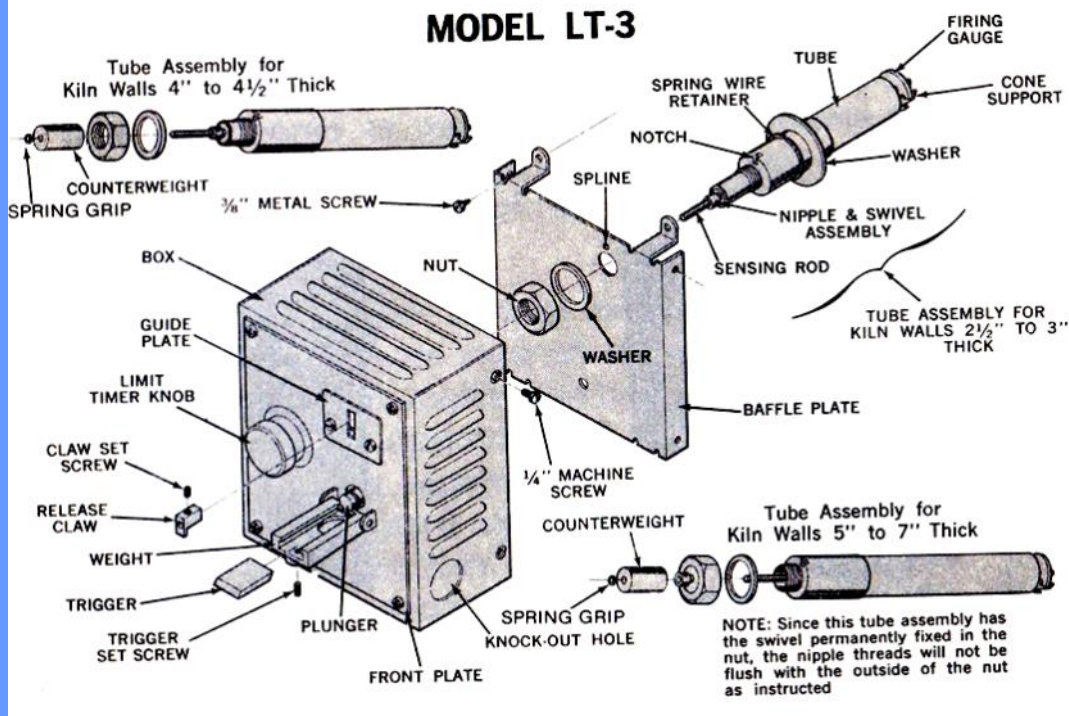
\$49.50      **\$54.45**      **TETLOW**





# HILLDAV

## Kiln Sitter Parts Kiln Sitter Parts



### KILN SITTER PARTS

PRICE NO GST	RETAIL with GST	
\$430.00	<b>\$473.00</b>	<b>TUBE ASSEMBLY LT-3K</b> (long) #70A (For Top loading kiln such as Duncan , Paragon)
\$430.00	<b>\$473.00</b>	<b>TUBE ASSEMBLY LT-3 (P/6")</b> (For kiln with a wall thickness of 6" or more)
\$32.50	<b>\$35.75</b>	<b>SENSING RODS</b> (All Lengths )
\$29.00	<b>\$31.90</b>	<b>CLAW ASSEMBLY</b>
\$18.40	<b>\$20.25</b>	<b>FIRING GAUGE</b>
\$30.40	<b>\$33.45</b>	<b>CONE SUPPORTS</b> (Pair)



Firing Gauge



Cone Supports